



# PRODUCTS CATALOG

ELECTRICAL ENCLOSURES & MODULAR CABINETS



# 20

[exmweb.com](http://exmweb.com)

# NEMA 1 ENCLOSURES

1100 CM

## MODULAR CONSTRUCTION ENCLOSURES

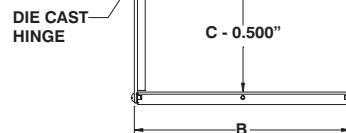
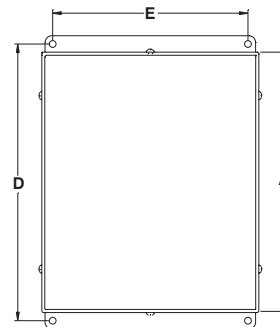
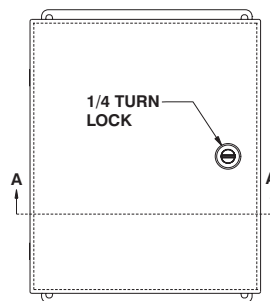
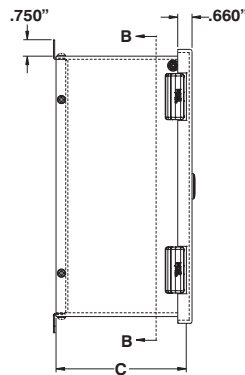
The 1100 CM are used where the control installation does not require a high degree of protection (such as watertight or dust tight), but where a quality enclosure is needed. Boxes and covers are made of high quality code gauge steel. The box consists of three parts : base, center and cover, which are assembled with self-tapping screws. **The base is offset to allow the direct mounting of instruments.** The enclo-

sures feature die cast hinges, which are bound to the cover by an exclusive concealed hinge pin system. The covers are interchangeable and can be removed by unfastening the anti-vibration lock nuts. Enclosures are closed with a 1/4 turn lock that ensures tight positive door to box contact and can be interchanged with an optional key lock (880 SCQCOM-K). Four external mounting holes are provided. Enclosures are fin-

ished with ANSI/ASA 61 smooth gray heat fused powder paint, electrostatically applied on a pre-treated base.

**CSA Certified / UL Listed  
NEMA/EEMAC 1 / IP30**

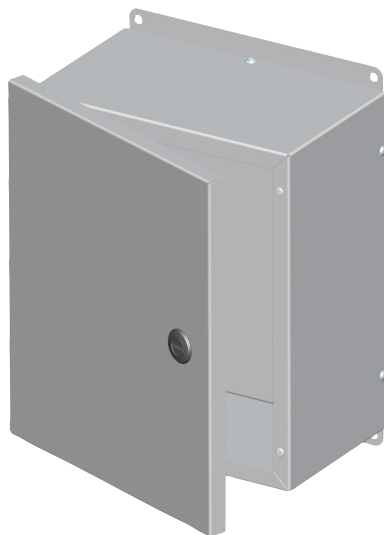
**Refer to p.734 to validate choice of substrate for the application**



SECTION B-B

SECTION A-A

**CUSTOMIZE THIS**  
ENCLOSURE WITH **BOXCAD**  
SIZE - COLOR - CUT-OUTS



CATALOG NUMBER	DIMENSIONS					SHIP WGT LBS.
	A	B	C	D	E	
1100 CM060604	6	6	4	6.75	5.00	4
1100 CM080604	8	6	4	8.75	5.00	5
1100 CM080804	8	8	4	8.75	7.00	6
1100 CM100804	10	8	4	10.75	7.00	7
1100 CM101004	10	10	4	10.75	9.00	8
1100 CM121004	12	10	4	12.75	9.00	10
1100 CM121204	12	12	4	12.75	11.00	11
1100 CM161204	16	12	4	16.75	11.00	14
1100 CM201604	20	16	4	20.75	15.00	20
1100 CM242004	24	20	4	24.75	19.00	28
1100 CM080606	8	6	6	8.75	5.00	6
1100 CM100806	10	8	6	10.75	7.00	8
1100 CM121006	12	10	6	12.75	9.00	11
1100 CM121206	12	12	6	12.75	11.00	13
1100 CM161206	16	12	6	16.75	11.00	16
1100 CM201606	20	16	6	20.75	15.00	23
1100 CM242006	24	20	6	24.75	19.00	31
1100 CM080608	8	6	8	8.75	5.00	7
1100 CM100808	10	8	8	10.75	7.00	10
1100 CM121008	12	10	8	12.75	9.00	13
1100 CM161208	16	12	8	16.75	11.00	17
1100 CM201608	20	16	8	20.75	15.00	25
1100 CM242008	24	20	8	24.75	19.00	34



p.498



p.498



p.498



p.498



p.498



p.498



p.534